



# Poliform

SOFAS COLLECTION 2025

**Poliform**

# SOFAS COLLECTION

Poliform presenta Sofas Collection, una collezione che reinterpreta il ruolo e l'estetica del living. Ispirati a linee organiche o caratterizzati da una forte connotazione architettonica, divani e poltrone Poliform si distinguono per il design esclusivo, l'altissimo livello di comfort e l'attenzione sartoriale ai rivestimenti. Ad accompagnarli sono tavolini e tappeti con cui creare un personale spazio di benessere. Perfettamente coerente con l'estetica Poliform, la collezione Sofas è firmata da Jean-Marie Massaud, Emmanuel Gallina, Marcel Wanders, Carlo Colombo, Flaviano Capriotti, Stefano Belingardi Clusoni, Roberto Barbieri e Soo Chan, all'insegna di un progetto di stile che fa dell'eleganza senza tempo il suo filo conduttore.

Poliform presents the Sofas Collection, a collection that reimagines the role and aesthetics of the living room. Poliform sofas and armchairs are inspired by organic lines or showcase a strong architectural style, standing out for their exclusive design, exceptional comfort, and meticulous attention to upholstery. They are complemented by coffee tables and rugs, creating a personal space of well-being. The Sofas Collection is designed by Jean-Marie Massaud, Emmanuel Gallina, Marcel Wanders, Carlo Colombo, Flaviano Capriotti, Stefano Belingardi Clusoni, Roberto Barbieri, and Soo Chan. True to Poliform's aesthetic, it centers around a design philosophy that makes timeless elegance its guiding principle.



ERNEST

8

SAINT-GERMAIN

38

BRERA

72

ORBIS

88

SUNDAY

98

BRISTOL

106

WESTSIDE SOFT

132

WESTSIDE

140

MONDRIAN

148

BELLPORT

164

DUNE

178

SHANGAI

186

GENTLEMAN

194

**ERNEST**  
SOFA

**Loai**  
ARMCHAIR

**Ernest**  
COFFEE TABLE

**Wall System**  
DAY SYSTEM

**Pivot**  
DOOR SYSTEM

**Surface**  
BOISERIE SYSTEM

**Nara**  
BENCH

**Shindo**  
CARPET





Divani Ernest in tessuto sfoderabile Shedir 02 burro. Poltrone Loai in velluto sfoderabile Persia 2002 bruciato, struttura in olmo nero. Tavolini Ernest in laccato lucido moka e in marmo travertino classico levigato. Composizione Wall System con porte Pivot Plus integrate. Wall System con struttura e ripiani arretrati in olmo nero, schienali in olmo nero print, vano centrale con schienali Stage in tessuto Mesh écru ed elemento Block con ante a ribalta laterali e due cassetti in olmo nero, top laccato metallico bronzo, luce a led integrata. Porte Pivot Plus con portale in olmo nero e stipite ardesia opaco, porte in olmo nero con telaio e maniglia Plus ardesia opaco. Boiserie Surface in olmo nero e in tessuto Mesh écru, profili ardesia opaco. Panca Nara in legno massello tinto olmo nero. Tappeto Shindo natural.

Ernest sofas in removable fabric Shedir 02 burro. Loai armchairs in removable velvet Persia 2002 bruciato, structure in black elm. Ernest coffee tables in glossy lacquer moka and mat marble travertino classico. Wall System composition with integrated Pivot Plus doors. Wall System with structure and recessed shelves in black elm, backs in black elm print, central compartment with Stage backs in fabric Mesh ecru and Block element with flap doors at the sides and two drawers in black elm, top in metal lacquer bronzo, integrated led light. Pivot Plus doors with portal in black elm and mat ardesia jamb, doors in black elm with mat ardesia Plus handle and frame. Surface wall panelling in black elm and in fabric Mesh ecru, mat ardesia profiles. Nara bench in solid wood stained black elm. Carpet Shindo natural.











**ERNEST**  
SOFA

**Surface**  
BOISERIE SYSTEM

**Code**  
DAY SYSTEM

**Ernest**  
COFFEE TABLE

**Nara**  
BENCH

**Trace**  
CARPET









Divano Ernest in tessuto sfoderabile Yukon 27 tabacco. Tavolini Ernest in olmo nero e in marmo travertino titanium levigato. Panca Nara in legno massello tinto olmo nero. Boiserie Surface in tessuto Mesh moka, olmo nero e laccato lucido tundra, profili ardesia opaco. Composizione sospesa Code, contenitori a giorno in laccato opaco bronzo con schienali in tessuto Mesh bronzo e luce a led integrata. Contenitori con ante a listelli Tape in olmo nero e vetro trasparente, telaio e maniglia in ardesia opaco, struttura interna in olmo nero con schienali in tessuto Mesh bronzo e luce a led integrata. Portale TV in olmo nero con fianchi in laccato metallico bronzo. Top retroilluminato e fianchi in laccato metallico bronzo. Tappeto Trace white.

Ernest sofa in removable fabric Yukon 27 tobacco. Ernest coffee tables in black elm and in mat marble travertino titanium. Nara bench in solid wood stained black elm. Surface wall panelling in fabric Mesh bronzo, black elm and glossy lacquer tundra, mat ardesia profiles. Wall mounted Code composition, open storage units in mat lacquer bronzo with backs in fabric Mesh bronzo and integrated led light. Storage units with Tape slatted doors in black elm and transparent glass, mat ardesia frame and handle, inner structure in black elm with backs in fabric Mesh bronzo and integrated led light. TV portal in black elm with sides in metal lacquer bronzo. Backlit top and sides in metal lacquer bronzo. Carpet Trace white.









**ERNEST**  
SOFA

**Surface**  
BOISERIE SYSTEM

**Ernest**  
COFFEE TABLE

**Wall System**  
DAY SYSTEM

**Trace**  
CARPET







Divani Ernest in pelle sfoderabile Nabuk 01 latte, chaise longue in tessuto sfoderabile Altair 02 corda. Tavolini Ernest in marmo travertino classico levigato e laccato lucido mosto. Boiserie Surface in tessuto Mesh bronzo con profili ardesia opaco. Composizione Wall System con struttura e ripiani arretrati in olmo nero, griglie e schienali in laccato metallico bronzo, vani con schienali Stage in tessuto Mesh moka, luce a led integrata. Tappeto Trace white.

Ernest sofas in removable leather Nabuk 01 latte, chaise longue in removable fabric Altair 02 corda. Ernest coffee tables in mat marble travertino classico and in glossy lacquer mosto. Surface wall panelling in fabric Mesh bronzo with mat ardesia profiles. Wall System composition with structure and recessed shelves in black elm, grids and backs in metal lacquer bronzo, compartments with Stage backs in fabric Mesh moka, integrated led light. Carpet Trace white.













**SAINT-GERMAIN**  
SOFA

**Loai**  
ARMCHAIR

**Ernest**  
COFFEE TABLE

**Nara**  
BENCH

**Surface**  
BOISERIE SYSTEM

**Shindo**  
CARPET









Divano Saint-Germain in tessuto sfoderabile Siro 01 bianco, cuscini in tessuto Mintaka 02 sabbia e velluto Persia 03 perla, piedini brown nickel opaco. Poltrone Loai in pelle sfoderabile Natural 06 naturale, struttura in olmo nero. Tavolini Ernest in laccato lucido moka e marmo travertino classico levigato. Panca Nara in legno massello tinto olmo nero. Boiserie Surface in olmo nero con profili ardesia opaco. Tappeto Shindo natural.

Saint-Germain sofa in removable fabric Siro 01 bianco, cushions in fabric Mintaka 02 sabbia and velvet Persia 03 perla, mat brown nickel feet. Loai armchairs in removable leather Natural 06 naturale, structure in black elm. Ernest coffee tables in glossy lacquer moka and mat marble travertino classico. Nara bench in solid wood stained black elm. Surface wall panelling in black elm with mat ardesia profiles. Carpet Shindo natural.

**SAINT-GERMAIN**  
SOFA

**Le Club**  
ARMCHAIR

**Koishi**  
COFFEE TABLE

**Orbit**  
COFFEE TABLE

**Code**  
DAY SYSTEM

**Cannelé**  
CARPET









Divano Saint-Germain in tessuto sfoderabile Siro 01 bianco, cuscini in tessuto Brest 11 cioccolato, velluto Persia 2002 bruciato e velluto Glasgow 01 crema, piedini brown nickel opaco. Poltrone Le Club in pelle non sfoderabile Silk 06 roccia. Tavolini Koishi, al centro con piani in marmo sahara noir levigato finitura poliestere, accanto al divano con piano in marmo zecevo levigato, struttura brunito opaco. Tavolini Orbit con piano e struttura in vetro bronzato, struttura in vetro soffiato. Contenitori Code con vani a giorno in laccato opaco bronzo, cassetti e fianchi in laccato opaco visone, top retroilluminato in laccato opaco bronzo e zoccolino in ardesia opaco. Tappeto Cannelé.

Saint-Germain sofa in removable fabric Siro 01 bianco, cushions in fabric Brest 11 cioccolato, velvet Persia 2002 bruciato and velvet Glasgow 01 crema, mat brown nickel feet. Le Club armchairs in non removable leather Silk 06 roccia. Koishi coffee tables, in the centre with tops in mat marble sahara noir polyester finish, next to the sofa with top in mat marble zecevo, mat brunito structure. Orbit coffee tables with top and structure in bronzed glass, structure in blown glass. Code open storage units in mat lacquer bronzo, drawers and sides in mat lacquer visone, backlit top in mat lacquer bronzo and mat ardesia plinth. Carpet Cannelé.







**SAINT-GERMAIN**  
SOFA

**Koishi**  
COFFEE TABLE

**Ube**  
STOOL

**Shindo**  
CARPET









Divani Saint-Germain in tessuto sfoderabile Siro 01 bianco, cuscini in tessuto Brest 02 salvia e velluto Tebe 07 oliva, piedini brown nickel opaco. Tavolino Saint-Germain con piano in olmo nero, struttura brunito opaco. Tavolini Koishi, al centro con piano in marmo verde lepanto levigato, accanto al divano con piano in vetro riflettente blu, struttura brunito opaco. Sgabelli Ube in legno massello tinto olmo nero. Tappeto Shindo celadon.

Saint-Germain sofas in removable fabric Siro 01 bianco, cushions in fabric Brest 02 salvia and velvet Tebe 07 oliva, mat brown nickel feet. Saint-Germain coffee table with top in black elm, mat brunito structure. Koishi coffee tables, in the centre with top in mat marble verde lepanto, next to the sofa with top in blu reflecting glass, mat brunito structure. Ube stools in solid wood stained black elm. Carpet Shindo celadon.



**SAINT-GERMAIN**  
SOFA

**Le Club**  
ARMCHAIR

**Koishi**  
COFFEE TABLE

**Surface**  
BOISERIE SYSTEM

**Lexington**  
DAY SYSTEM

**Symphony**  
SIDEBOARD

**Relief**  
CARPET











Divano Saint-Germain in tessuto sfoderabile Agadir 03 pepe, cuscini in tessuto Nancy 100 cenere e velluto Persia 1404 carbone, piedini brown nickel opaco. Tavolini Koishi, accanto al divano con piano in vetro blu riflettente e in marmo zecevo levigato, al centro con piano in marmo zecevo levigato, strutture verniciato champagne opaco. Poltrone Le Club in pelle non sfoderabile Silk 01 crema. Madia Symphony in rovere gold con top in marmo zecevo levigato, vano a giorno, maniglie e basamento con piedini in brown nickel opaco. Libreria Lexington con montanti a soffitto in rovere gold e champagne opaco, ripiani e contenitori in rovere gold e champagne opaco. Boiserie Surface in tessuto lino écreu con profili in champagne opaco. Tappeto Relief cammello.

Saint-Germain sofa in removable fabric Agadir 03 pepe, cushions in fabric Nancy 100 cenere and velvet Persia 1404 carbone, mat brown nickel feet. Koishi coffee tables, next to the sofa with top in blu reflecting glass and mat marble zecevo, in the centre with top in mat marble zecevo, painted mat champagne structures. Le Club armchairs in non removable leather Silk 01 crema. Symphony sideboard in gold oak with top in mat marble zecevo, open compartment, handles and base with feet in mat brown nickel. Lexington bookcase with gold oak and mat champagne floor-ceiling uprights, shelves and storage units in gold oak. Surface wall panelling in fabric lino ecreu with mat champagne profiles. Carpet Relief cammello.

**SAINT-GERMAIN**  
SOFA

**Koishi**  
COFFEE TABLE

**New York**  
POUF

**Lexington**  
WALK-IN CLOSET

**Surface**  
BOISERIE SYSTEM

**Senzafine**  
WARDROBE

**Code**  
DAY SYSTEM

**Cannelé**  
CARPET











Divano Saint-Germain in tessuto sfoderabile Brest 02 salvia, cuscini in velluto Tebe 07 oliva, piedini brown nickel opaco. Tavolino Koishi con piano in marmo zecevo levigato e struttura brunito opaco. Pouf New York in velluto sfoderabile Persia 1404 carbone e in pelle non sfoderabile Soft 14 oliva, entrambi con piedini brown nickel lucido. Boiserie Surface in tessuto lino écru con profili in champagne opaco. Cabina armadio Lexington con montanti a soffitto champagne opaco, attrezzatura in nobilitato olmo, tecnocover Grain 05 latte e champagne opaco. Nella pagina successiva: divano Saint-Germain Boomerang in pelle sfoderabile Nabuk 06 mastice, cuscini in tessuto Brest 05 danubio e velluto Glasgow 04 avio, piedini brown nickel opaco. Pouf Saint-Germain in tessuto sfoderabile Siro 01 bianco, piedini brown nickel opaco. Tavolino Koishi con piano in marmo zecevo levigato e struttura brunito opaco. Armadio Senzafine Cover con ante in tessuto lino bruciato e champagne opaco, boiserie Surface in rovere gold; mensole e cassetiera Code in laccato metallico ottone. Tappeto Cannelé.

Saint-Germain sofa in removable fabric Brest 02 salvia, cushions in velvet Tebe 07 oliva and mat brown nickel feet. Koishi coffee table with top in mat marble zecevo and mat brunito structure. New York poufs in removable velvet Persia 1404 carbone and in non removable leather Soft 14 oliva, both with glossy brown nickel feet. Surface wall panelling in fabric lino ecru with mat champagne profiles. Lexington walk-in closet with mat champagne floor-ceiling uprights, equipment in elm melamine, tecnocover Grain 05 latte and mat champagne. Next page: Saint-Germain Boomerang sofa in removable leather Nabuk 06 mastice, cushions in fabric Brest 05 danubio and velvet Glasgow 04 avio, mat brown nickel feet. Saint-Germain pouf in removable fabric Siro 01 bianco, mat brown nickel feet. Koishi coffee table with top in mat marble zecevo and mat brunito structure. Senzafine Cover wardrobe with leaf doors in fabric lino bruciato and mat champagne, Surface wall panelling in gold oak; Code shelves and chest of drawers in metal lacquer ottone. Carpet Cannelé.







**BRERA**  
SOFA

**Mush**  
COFFEE TABLE

**Ube**  
STOOL

**Lexington**  
DAY SYSTEM

**Shindo**  
CARPET









Divani Brera in tessuto sfoderabile Kiala 02 champagne, cuscini in tessuto Janaki 01 avorio, basamento e bracciolo Slim in cuoio 07 castagna, piedini brown nickel opaco. Tavolini Mush, al centro, piani in olmo nero e marmo sahara noir levigato finitura poliестere, struttura in olmo nero; accanto al divano, piano e struttura in cuoio 07 castagna. Sgabelli Ube in legno massello tinto olmo nero. Libreria Lexington con montanti a soffitto in olmo nero e ardesia opaco, ripiani e contenitori in olmo nero. Tappeto Shindo natural.

Brera sofas in removable fabric Kiala 02 champagne, cushions in fabric Janaki 01 avorio, base and Slim armrest in hide 07 castagna, mat brown nickel feet. Mush coffee tables, in the centre, tops in black elm and mat marble sahara noir with polyester finish, black elm structure; next to sofa, top and structure in hide 07 castagna. Ube stools in solid wood stained black elm. Lexington bookcase with black elm and mat ardesia floor-ceiling uprights, shelves and storage units in black elm. Carpet Shindo natural.







**BRERA**  
SOFA

**Kaori**  
ARMCHAIR

**Hima**  
SCREEN

**Mush**  
COFFEE TABLE

**Surface**  
BOISERIE SYSTEM

**Orbit**  
COFFEE TABLE

**Shindo**  
CARPET









Divano Brera in tessuto sfoderabile Kiala 08 bronzo, cuscini in tessuto Janaki 02 champagne e velluto Persia 1404 carbone; basamento, mensola e bracciolo Slim in cuoio 02 nero, piedini brown nickel opaco. Paravento Hima con configurazione a quattro elementi nella versione bassa, struttura brown nickel opaco e corda colore cenere. Tavolini Mush, al centro, piani in marmo sahara noir levigato finitura poliester e struttura in olmo nero; piano e struttura in cuoio 02 nero; accanto al divano, piano e struttura in olmo nero. Poltrona Kaori con scocca esterna in cuoio 02 nero, scocca interna e seduta in pelle sfoderabile Silk 08 nero, piedini brown nickel opaco. Nella pagina successiva: poltrona Kaori con tavolino Orbit, piano e struttura in vetro bronzato, struttura in vetro soffiato. Boiserie Surface in tessuto lino scuro e olmo nero print, profili in ardesia opaco, attrezzata con contenitori Code in olmo nero con top retroilluminato in marmo sahara noir levigato finitura poliester e mensole in laccato metallico bronzo. Tappeto Shindo natural.

Brera sofa in removable fabric Kiala 08 bronzo, cushions in fabric Janaki 02 champagne and velvet Persia 1404 carbone; base, shelf and Slim armrest in hide 02 nero, mat brown nickel feet. Hima screen with four-element configuration in the low version, structure in mat brown nickel and rope in the colour cenere. Mush coffee tables, in the centre, tops in mat marble sahara noir with polyester finish and black elm structure; top and structure in hide 02 nero; next to sofa, top and structure in black elm. Kaori armchair with outer shell in hide 02 nero, inner shell and seat in removable leather Silk 08 nero, mat brown nickel feet. Next page: Kaori armchair with Orbit coffee table, top and structure in bronzed glass, structure in blown glass. Surface wall panelling in fabric lino scuro and black elm print, profiles in mat ardesia, equipped with storage units Code in black elm with backlit top in mat marble sahara noir with polyester finish and shelves in metal lacquer bronzo. Carpet Shindo natural.







**ORBIS**  
SOFA

**Strata**  
COFFEE TABLE

**Orbis**  
ARMCHAIR

**Duke**  
SIDEBOARD

**Surface**  
BOISERIE SYSTEM

**Code**  
DAY SYSTEM

**Ube**  
STOOL

**Plain**  
CARPET







Divani Orbis in velluto sfoderabile Persia 2002 bruciato, piedini in metallo dark sheer lucido. Poltrone Orbis in pelle sfoderabile Suede 05 cammello, piedini in metallo dark sheer lucido. Tavolini Strata con piano in vetrofusione bronzo, gambe in olmo nero. Madie Duke in olmo nero con top e piano inferiore del vano a giorno in marmo nero marquina levigato finitura poliestere. Boiserie Surface in tessuto Mesh bronzo, profili ardesia opaco. Mensole Code retroilluminate in laccato metallico bronzo. Nella pagina introduttiva: sgabelli Ube in legno massello tinto olmo nero. Tappeto Plain tortora.

Orbis sofas in removable velvet Persia 2002 bruciato, feet in glossy metal dark sheer. Orbis armchairs in removable leather Suede 05 cammello, feet in glossy metal dark sheer. Strata coffee tables with top in fused glass bronze, legs in black elm. Duke sideboard in black elm with top and lower shelf of the open compartment in mat marble nero marquina polyester finish. Surface wall panelling in fabric Mesh bronzo, profiles in mat ardesia. Code backlit shelves in metal lacquer bronzo. Opening page: Ube stools in solid wood stained black elm. Carpet Plain tortora.











**SUNDAY**  
SOFA

**Mush**  
COFFEE TABLE

**Sunday**  
ARMCHAIR

**Code**  
DAY SYSTEM

**Shindo**  
CARPET









Divano Sunday in tessuto sfoderabile Yukon 27 tabacco e piedini brown nickel opaco. Poltrona Sunday in tessuto sfoderabile Siro 02 lino e piedini brown nickel opaco. Tavolino Mush con piano in marmo sahara noir levigato finitura poliestere, struttura in olmo nero. Composizione Code con ante a listelli Tape in olmo nero e vetro trasparente, maniglia in ardesia opaco, top in olmo nero e luce a led integrata. Tappeto Shindo natural.

Sunday sofa in removable fabric Yukon 27 tabacco and mat brown nickel feet. Sunday armchair in removable fabric Siro 02 lino and mat brown nickel feet. Mush coffee table with top in mat marble sahara noir with polyester finish, black elm structure. Code composition with Tape slatted doors in black elm and transparent glass, handle in mat ardesia, top in black elm and integrated led light. Carpet Shindo natural.







**BRISTOL**  
SOFA

**Mad Chair**  
ARMCHAIR

**Ernest**  
COFFEE TABLE

**Surface**  
BOISERIE SYSTEM

**Trace**  
CARPET









Divano Bristol con cuscineria comfort in tessuto sfoderabile Arcadia 03 canapa, cuscini in velluto Tebe 07 oliva e Persia 2002 bruciato, piedini estetici opzionali brown nickel lucido. Poltrone Mad Chair in pelle sfoderabile Suede 01 avorio, basamento girevole dark sheer lucido. Tavolini Ernest in laccato lucido moka e in marmo travertino classico levigato. Boiserie Surface in olmo nero con profili ardesia opaco. Tappeto Trace white.

Bristol sofa with backrest cushion comfort in removable fabric Arcadia 03 canapa, cushions in velvet Tebe 07 oliva and Persia 2002 bruciato, optional aesthetic feet in glossy brown nickel. Mad Chair armchairs in removable leather Suede 01 avorio, swivel base in glossy dark sheer. Ernest coffee tables in glossy lacquer moka and mat marble travertino classico. Surface wall panelling in black elm with mat ardesia profiles. Carpet Trace white.







**BRISTOL**  
SOFA

**Jane**  
ARMCHAIR

**Baba**  
COFFEE TABLE

**Henry**  
POUF

**Frame**  
CARPET







Divano Bristol con cuscineria singola, rivestimento in tessuto sfoderabile Naxos 17 corda con cuscini in tessuto Nancy 101 carbone e Naxos 17 corda. Poltrona Jane in velluto sfoderabile Persia 54 prussia e basamento in olmo nero. Tavolino Baba in brown nickel lucido e piano in marmo sahara noir levigato finitura poliestere. Tappeto Frame carbone.

Bristol sofa with single backrest cushion, removable cover in fabric Naxos 17 corda with cushions in fabric Nancy 101 carbone and Naxos 17 corda. Jane armchair in removable velvet Persia 54 prussia and base in black elm. Baba coffee table in glossy brown nickel and top in mat marble sahara noir polyester finish. Carpet Frame carbone.







**BRISTOL**  
SOFA

**Mad Chair**  
ARMCHAIR

**Bristol**  
COFFEE TABLE

**Onda**  
POUF

**Stripes**  
CARPET









Divano Bristol con cuscineria doppia, in tessuto sfoderabile Rabat 412 cemento, cuscini in velluto Persia 1404 carbone e 1403 ocra, tavolino retrodivano in olmo nero, inserti e piedini brown nickel opaco, cassetto laccato opaco bronzo. Pouf Bristol in velluto sfoderabile Persia 1404 carbone. Madia e tavolino Bristol in olmo nero, inserti e piedini brown nickel opaco; madia con cassetti laccato opaco bronzo. Tavolino Baba brown nickel opaco e piano in marmo noir saint laurent levigato. Poltrone Mad Chair in velluto sfoderabile Persia 1404 carbone, gambe in olmo nero. Nella pagina introduttiva: pouf Onda in velluto sfoderabile Persia 1403 ocra. Tappeto Stripes.

Bristol sofa with double backrest cushion, in removable fabric Rabat 412 cemento, cushions in velvet Persia 1404 carbone and 1403 ocra, coffee table to the back of the sofa in black elm, inlays and feet in mat brown nickel, drawer in mat lacquer bronzo. Bristol pouf in removable velvet Persia 1404 carbone. Sideboard and coffee table Bristol in black elm, inlays and feet in mat brown nickel; sideboard with drawers in mat lacquer bronzo. Baba coffee table in mat brown nickel and top in mat marble noir saint laurent. Mad Chair armchairs in removable velvet Persia 1404 carbone, legs in black elm. Opening page: Onda pouf in removable velvet Persia 1403 ocra. Stripes carpet.











**WESTSIDE SOFT**  
SOFA

**Kay Lounge**  
ARMCHAIR

**Westside**  
COFFEE TABLE

**Nara**  
COFFEE TABLE

**Wall System**  
DAY SYSTEM

**Shindo**  
CARPET









Divano Westside Soft in tessuto sfoderabile Fushui 01 bronzo, cuscini in tessuto Janaki 02 champagne, bracciolo Slim con esterno in cuoio 08 fango, interno bracciolo e basamento in brown nickel opaco. Tavolini Westside con piano superiore in marmo zecevo levigato, struttura in olmo nero. Tavolini Nara in legno massello tinto olmo nero. Composizione Wall System con struttura e cassetti Flat in laccato opaco bronzo, schienali in laccato metallico bronzo, schienali Stage in tessuto lino scuro con mensole retroilluminate in laccato metallico bronzo, luce a led integrata. Tappeto Shindo grey.

Westside Soft sofa in removable fabric Fushui 01 bronzo, cushions in fabric Janaki 02 champagne, Slim arm with outer part in hide 08 fango, inner part and base in mat brown nickel. Westside coffee tables with top in mat marble zecevo, black elm structure. Nara coffee tables in solid wood stained black elm. Wall System composition with structure and Flat drawers in mat lacquer bronzo, backs in metal lacquer bronzo, Stage backs in fabric lino scuro with backlit shelves in metal lacquer bronzo, integrated led light. Carpet Shindo grey.









**WESTSIDE**  
SOFA

**Kay Lounge**  
ARMCHAIR

**Westside**  
COFFEE TABLE

**New York**  
POUF

**Surface**  
BOISERIE SYSTEM

**Code**  
DAY SYSTEM

**Nara**  
COFFEE TABLE

**Plain**  
CARPET









Divano Westside in tessuto sfoderabile Arcadia 05 bronzo, cuscini in tessuto Siro 04 notte, basamento brown nickel opaco. Tavolini Westside con piano in marmo sahara noir opaco finitura poliestere e in olmo nero, struttura in olmo nero. Poltrona Kay Lounge in pelle non sfoderabile Silk 06 roccia e struttura in cromo satinato. Tavolino Nara in legno massello noce c. Boiserie Surface in tessuto lino chiaro e laccato opaco canapa, profili champagne opaco. Sistema Code, contenitori retroilluminati in olmo nero e laccato metallico ottone con top in marmo zecevo levigato, mensole retroilluminate in laccato metallico ottone e mensolone in olmo nero. Pouf New York in velluto sfoderabile Tebe 08 notte, piedini brown nickel opaco. Tappeto Plain tortora.

Westside sofa in removable fabric Arcadia 05 bronzo, cushions in fabric Siro 04 notte, base in mat brown nickel. Westside coffee tables with top in mat marble sahara noir with polyester finish and in black elm, black elm structure. Kay Lounge armchair in non removable leather Silk 06 roccia and brushed chrome structure. Nara coffee table in solid wood walnut c. Surface wall panelling in fabric lino chiaro and mat lacquer canapa, mat champagne profiles. Code system, backlit storage units in black elm and metal lacquer ottone with top in mat marble zecevo, backlit shelves in metal lacquer ottone and thick shelf in black elm. New York pouf in removable velvet Tebe 08 notte, feet in mat brown nickel. Carpet Plain tortora.







**MONDRIAN**  
SOFA

**Stanford**  
ARMCHAIR

**Mondrian**  
COFFEE TABLE

**Frame**  
CARPET









Divano Mondrian in tessuto sfoderabile Olimpia 11 polvere, cuscini in velluto Persia 1404 carbone e tessuto Olimpia 11 polvere con inserto a croce Persia carbone, tavolino integrato e schienale in legno con mensole in olmo nero, piedini brown nickel lucido. Pouf Mondrian in velluto sfoderabile Persia 1404 carbone. Tavolini Mondrian con struttura in fusione di bronzo lucidata oro, piani in marmo noir saint laurent lucido e laccato lucido ginger. Poltrone Stanford con rivestimento non sfoderabile, esterno in cuoio 26 invecchiato, interno in pelle Soft 04 cognac, basamento girevole brown nickel lucido. Tappeto Frame grey.

Mondrian sofa in removable fabric Olimpia 11 polvere, cushions in velvet Persia 1404 carbone and fabric Olimpia 11 polvere with cross insert in Persia carbone, integrated coffee table and backrest in wood with shelves in black elm, feet in glossy brown nickel. Mondrian pouf in removable velvet Persia 1404 carbone. Mondrian coffee tables with structure in gold polishes bronze casting, tops in glossy marble noir saint laurent and glossy lacquer ginger. Stanford armchairs with non removable cover, outer cover in hide 26 invecchiato, inner cover in leather Soft 04 cognac, swivel base in glossy brown nickel. Carpet Frame grey.









**MONDRIAN**  
SOFA

**Mad Joker**  
ARMCHAIR

**Mondrian**  
COFFEE TABLE

**Play**  
POUF

**Soori**  
COFFEE TABLE

**Plain**  
CARPET

**Soft**  
CARPET









Divano Mondrian in tessuto sfoderabile Sparta 18 panna, cuscini in tessuto Sparta 15 ardesia e 18 panna con inserto a croce Persia carbone, piedini brown nickel lucido. Tavolini e consolle Mondrian con struttura in fusione di bronzo lucidata oro e piani in marmo noir saint laurent lucido e laccato lucido visone. Pouf Play in pelle intrecciata non sfoderabile Nabuk 02 tortora. Tappeto Soft.

Mondrian sofa in removable fabric Sparta 18 panna, cushions in fabric Sparta 15 ardesia and 18 panna with cross insert in Persia carbone, glossy brown nickel feet. Mondrian coffee tables and console with structure in gold polished bronze casting and top in glossy marble noir saint and visone glossy lacquer. Play pouf in non removable woven leather Nabuk 02 tortora. Carpet Soft.







Poltrone Mad Joker con rivestimento non sfoderabile, esterno in pelle Nabuk 02 tortora e interno tessuto Sheffield 03 tortora, basamento girevole brown nickel lucido. Tavolino Soori in metallo finitura bronzo anticato. Tappeto Plain tortora.

Mad Joker armchairs with non removable cover, outer cover in leather Nabuk 02 tortora and inner cover in fabric Sheffield 03 tortora, swivel base in glossy brown nickel. Soori coffee table in metal with antique bronze finish. Carpet Plain tortora.

**BELLPORT**  
SOFA

**Creek**  
COFFEE TABLE

**New York**  
POUF

**Jane Large**  
ARMCHAIR

**Soori**  
COFFEE TABLE

**Jane Lounge**  
ARMCHAIR







Divani Bellport in pelle sfoderabile Nabuk 09 ruggine, cuscini con decoro e poggiatesta in pelle Nabuk 09 ruggine, cuscini in velluto Persia 1404 carbone, piedini con profilo brown nickel opaco. Al centro, tavolini Creek, quadrato con piano superiore in marmo sahara noir lucido, rettangolare con piano superiore in vetro fumé, piani inferiori in olmo nero e struttura brown nickel satinato. Accanto ai divani, tavolini Creek rotondi con piano superiore in olmo nero, piano inferiore in olmo nero e struttura brown nickel satinato. Tavolino Creek rettangolare con piano superiore in vetro fumé e piano inferiore in laccato lucido moka, struttura brown nickel satinato. Pouf New York in tessuto sfoderabile Naxos 16 sabbia e piedini brown nickel opaco.

Bellport sofas in removable leather Nabuk 09 ruggine, cushions with decoration and lower back cushion in leather Nabuk 09 ruggine, cushions in velvet Persia 1404 carbone, feet with profile in mat brown nickel. In the center, Creek coffee tables, square version with top in glossy marble sahara noir, rectangular version with top in fumé glass, lower shelves in black elm and mat brown nickel structure. Next to the sofas, round Creek coffee tables with top in black elm, lower shelf in black elm and brushed brown nickel structure. Rectangular Creek coffee table with top in fumé glass and lower shelf in glossy lacquer moka, brushed brown nickel structure. New York pouf in removable fabric Naxos 16 sabbia and mat brown nickel feet.









Poltrona Jane Large e pouf Jane in pelle non sfoderabile Nabuk 09 ruggine, basamento in olmo nero. Tavolino Soori in metallo finitura bronzo anticato. Nelle pagine successive: poltrone Jane Large in tessuto sfoderabile Kitami 04 sabbia, basamento in olmo nero. Day bed Bellport in pelle sfoderabile Nabuk 08 prussia e piedini con profilo brown nickel opaco. Tavolini Soori in metallo finitura bronzo anticato. Poltrona Jane Lounge in pelle non sfoderabile Soft 14 oliva, basamento in olmo nero.

Jane Large armchair and Jane pouf in non removable leather Nabuk 09 ruggine, black elm base. Soori coffee table in metal with antique bronze finish. Next pages: Jane Large armchairs in removable fabric Kitami 04 sabbia, black elm base. Bellport day bed in removable leather Nabuk 03 prussia and feet with profile in mat brown nickel. Soori coffee tables in metal with antique bronze finish. Jane Lounge armchair in non removable leather Soft 14 oliva, base in black elm.









**DUNE**  
SOFA

**Mad Chair**  
ARMCHAIR

**Frame**  
CARPET

**Mad Queen**  
ARMCHAIR







Divano e pouf Dune in tessuto sfoderabile Rabat 400 écru, cuscini in tessuto Nancy 101 carbone, velluto Persia 1404 carbone e tessuto Rabat 400 écru con bordura gros-grain nero. Poltrona Mad Chair in tessuto sfoderabile Nancy 101 carbone, basamento girevole brown nickel opaco. Tappeto Frame gold. Nelle pagine successive: poltrone Mad Queen con rivestimento sfoderabile, esterno in tessuto Naxos 08 antracite e interno in tessuto Gibson matelassé 07 grafite, gambe in olmo nero.

Sofa and pouf Dune in removable fabric Rabat 400 ecru, cushions in fabric Nancy 101 carbone, velvet Persia 1404 carbone and fabric Rabat 400 ecru with border in grosgrain nero. Mad Chair armchair in removable fabric Nancy 101 carbone, mat brown nickel swivel base. Carpet Frame gold. Next pages: Mad Queen armchairs with removable cover, outer cover in fabric Naxos 08 antracite and inner cover in fabric Gibson matelassé 07 grafite, legs in black elm.







**SHANGAI**  
SOFA

**Flute**  
COFFEE TABLE

**Ipanema**  
ARMCHAIR









Divano e pouf Shangai, versione in piuma, rivestimento in tessuto sfoderabile Irati 10 acciaio, cuscini in tessuto Naxos 16 sabbia, zoccolino estetico in alluminio brill. Tavolino Flute in laccato opaco borgogna. Nella pagina successiva: poltrona Ipanema in rovere spessart e seduta in pelle non sfoderabile Nabuk 01 latte.

Shangai sofa and pouf, version in down, removable cover in fabric Irati 10 acciaio, cushions in fabric Naxos 16 sabbia, decoration plinth in aluminium brill. Flute coffee table in mat lacquer borgogna. Next page: Ipanema armchair in spessart oak and seat in non removable leather Nabuk 01 latte.







**GENTLEMAN'S FRIEND**  
SOFA

**Gentleman Relax**  
ARMCHAIR

**Gentleman**  
POUF

**Soori**  
COFFEE TABLE

**Code**  
DAY SYSTEM

**Gentleman Reserved**  
ARMCHAIR

**Plain**  
CARPET

**Cannelé**  
CARPET









Divano Gentleman's Friends in velluto sfoderabile Tebe 08 notte, basamento brown nickel lucido. Poltrone Gentleman Relax e pouf Gentleman in tessuto sfoderabile Siro 02 lino, basamenti brown nickel lucido. Tavolini Soori in metallo finitura bronzo anticato. Madia Code in noce c con maniglia e basamento con piedini champagne opaco; vano a giorno in laccato opaco champagne con schienale in specchio bronzo, luce a led integrata e top interno in marmo zecevo levigato. Composizione sospesa Code con mensolone retroilluminato in laccato metallico ottone, vani a giorno in laccato opaco ottone e schienali in noce c. Tappeto Plain tortora. Nella pagina successiva: poltrona Gentleman Reserved e pouf Gentleman in pelle sfoderabile Silk 10 terracotta, basamenti champagne opaco. Tappeto Plain natural. Poltrona Gentleman Relax in tessuto sfoderabile Siro 02 lino, basamento brown nickel lucido. Tappeto Cannelé.

Gentleman's Friends sofa in removable velvet Tebe 08 notte, glossy brown nickel base. Gentleman Relax armchairs and Gentleman pouf in removable fabric Siro 02 lino, glossy brown nickel bases. Soori coffee tables in metal with antique bronze finish. Code sideboard in walnut c with handle and base with feet in mat champagne; open compartment in mat lacquer champagne with back in bronzed mirror, integrated led light and top in mat marble zecevo. Wall mounted Code composition with backlit thick shelf in metal lacquer ottone, open compartments in mat lacquer ottone and backs in walnut c. Carpet Plain tortora. Next page: Gentleman Reserved armchair and Gentleman pouf in removable leather Silk 10 terracotta, mat champagne bases. Carpet Plain natural. Gentleman Relax armchair in removable fabric Siro 02 lino and glossy brown nickel base. Carpet Cannelé.







POLIFORM INDOOR COLLECTION

SOFAS



Ernest, design JM Massaud  
pp. 8-17, 18-27, 28-37



Saint-Germain, design JM Massaud  
pp. 38-43, 44-51, 52-57, 58-63, 64-71



Brera, design JM Massaud  
pp. 72-79, 80-85



Bristol, design JM Massaud  
pp. 106-111, 114-120, 122-131



Westside Soft, design JM Massaud  
pp. 132-139



Westside, design JM Massaud  
pp. 140-145



Mondrian, design JM Massaud  
pp. 148-153, 156-161



Bellport, design JM Massaud  
pp. 164-171



Dune, design C. Colombo  
pp. 178-183



Shangai, design C. Colombo  
pp. 186-191



Orbis, design E. Gallina  
pp. 88-97



Sunday, design F. Capriotti  
pp. 98-103



Gentleman's Friends, design M. Wanders  
pp. 194-197

COFFEE TABLES



Ernest, design JM Massaud  
pp. 8-17, 18-27, 28-37, 38-42, 106-111



Strata, design E. Gallina  
pp. 90-97



Mush, design JM Massaud  
pp. 72-78, 80-83, 98-101



Koishi, design JM Massaud  
pp. 44-51, 52-57, 58-63, 66-71



Westside, design JM Massaud  
pp. 132-139, 140-147



Creek, design JM Massaud  
pp. 164-171



Mondrian, design JM Massaud  
pp. 150-154, 157-161



Bristol, design JM Massaud  
pp. 124-131



Tribeca, design JM Massaud



Ube, design JM Massaud  
pp. 54-55, 72-75, 89



Nara, design JM Massaud  
pp. 134-139, 142-143,



Soori, design Soo Chan  
pp. 162, 172-175, 194-199



Orbit, design JM Massaud  
pp. 44-47, 86



Ilda, design JM Massaud



Dama, design R&D Poliform



Flute, design R. Barbieri  
pp. 186-191



Baba, design R. Barbieri  
pp. 114-117

## POLIFORM INDOOR COLLECTION

### ARMCHAIRS



Loai, design S. Belingardi Clusoni  
pp. 8-17, 38-41



Orbis, design E. Gallina  
pp. 90-97



Sunday, design F. Capriotti  
pp. 100-105



Gentleman Single, design M. Wanders



Gentleman Relax, design M. Wanders  
pp. 194-199, 201



Gentleman Reserved, design M. Wanders  
pp. 200



Kaori, design JM Massaud  
pp. 80-87



Kaori Lounge, design JM Massaud



Curve, design E. Gallina



Jane, design E. Gallina  
pp. 116-121



Jane Large, design E. Gallina  
pp. 172, 174-175



Jane Lounge, design E. Gallina  
pp. 176-177



Le Club, design JM Massaud  
pp. 44-51, 60-61



Stanford, design JM Massaud  
pp. 150-155



Stanford Lounge, design JM Massaud



Ipanema, design JM Massaud  
pp. 188-193



Santa Monica, design JM Massaud



Santa Monica Lounge, design JM Massaud



Kay Lounge, design JM Massaud  
pp. 134-139, 141-146



Mad Chair, design M. Wanders  
pp. 108-113, 124-129, 180-181



Mad Joker, design M. Wanders  
pp. 157-162



Wallace, design JM Massaud



Mad Queen, design M. Wanders  
pp. 184-185



Mad King, design M. Wanders



Mad Chaise Longue, design M. Wanders



## POLIFORM INDOOR COLLECTION

### POUFS



New York, design JM Massaud  
pp. 66-67, 141-143, 166-167



Play, design R&D Poliform  
pp. 161



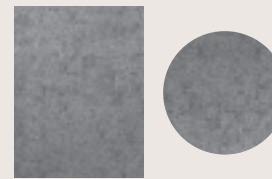
Onda, design R&D Poliform  
pp. 123

### SCREENS

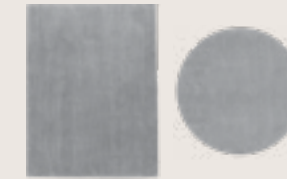


Hima, design JM Massaud  
pp. 80-85

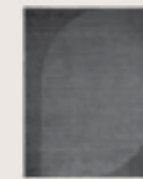
### CARPETS



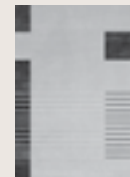
Trace, design R&D Poliform  
pp. 18-27, 28-37, 106-113



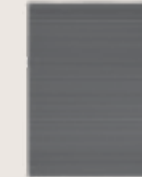
Shindo, design R&D Poliform  
pp. 9, 39, 53, 73, 81, 99, 133



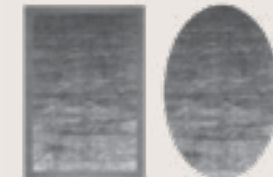
Relief, design R&D Poliform  
pp. 58-63



Tratto, design R&D Poliform



Cannelé, design R&D Poliform  
pp. 44-51, 70-71, 201



Frame, design R&D Poliform  
pp. 114-121, 148-154, 178-183



Plain, design R&D Poliform  
pp. 88-97, 140-147, 162, 194-200



Soft, design R&D Poliform  
pp. 157-161



Dama, design R&D Poliform



Stripes, design R&D Poliform  
pp. 123

**Poliform Spa**

via Montesanto 28  
Casella postale n. 1  
22044 Inverigo (CO) Italy  
t +39 031 6951  
info@poliform.it  
poliform.it



2018 Adi Compasso D'oro  
Career Award

**Poliform realizza tutte le sue collezioni in Italia usando componenti e materie prime selezionate.**

**All the Poliform collections are manufactured 100% in Italy using top-class components and materials.**

Poliform si riserva il diritto di apportare, senza preavviso, ogni modifica mirata al miglioramento funzionale e qualitativo dei propri prodotti. Testi e disegni presenti in questo stampato hanno scopo divulgativo: per ogni aspetto tecnico e dimensionale fare riferimento ai listini aziendali e relativi aggiornamenti. I campioni di colori e materiali hanno valore indicativo.

Poliform reserves the rights at all time to apply modifications for the functional or qualitative improvement of its products. Texts and drawings present in this brochure have a divulgative purpose: for every technical and dimensional aspect please refer to the company's price lists and their relative updatings. The colour and material samples have an indicative value.

**Creative Direction**

Apartamento Studios

Discover  
the collection

**Graphic Design**

Apartamento Studios

**Interiors Photography**

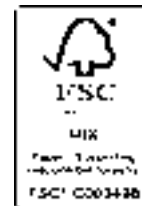
Federico Cedrone, Omar Sartor

**Interiors Styling**

Poliform Lab

1st edition April 2025  
cod. 139/R1/2025

Thanks to: Abigail Ozora Simpson, Alexa Lixfeld, Alicja Podgórska Birkner, Altea, Alzueta Gallery, Ames Gmbh, Antonia Ferrer, Aramu Blazer, Argenteria Dabbene, Artknit, Ash&Plumb, Atelier de Troupe, Atelier Vierkant, Borsalino, Bruno Gambone, Ceramiche Rometti, Chisel & Mouse, Craster, dust and form, Fedeli Cashmere, Flos, Folkform 2023, FontanaArte, Formworks Studio, Francis Gallery, Ganci Argenterie, Gardeco, Guax, Gubi, Helle Mardahl Studio, Ingo Maurer, Inoda+Sveje, J.&L. Lobmeyr, Kallia Panopoulou Ceramics, Karine Benvenuti, Laurie Poast, Loro Piana, M.A.H Gallery, Maddalena Selvini, Marco Minetti, Marea Hildebrand, Menu' AS, Micheluzzi Glass, Nahoor Limelight, Natura Ceramica, Nemo Lighting, Nina Norgaard, Nude Glass, Officina del Poggio, Oluce, Paola C., Parosh, Pulpo, Retrosuperfuture, Roberto Collina, Roberto Vera, Salvatori Design, Santa & Cole, Serax, Skultuna, Simon Ballen Botero per Nilufar gallery, simone & marcel, Society Limonta, Sofie Østerby, Time & Style, Trizo 21, Valextra, When Objects Work, Wonderglass, www.101cph.com, www.barbaraventura.it, www.IvanoRedaelli.it, Yasha Butler, Yiorgos Trichas, Zanat



ASSARREDO  
FEDERLEGNARREDO



