



---

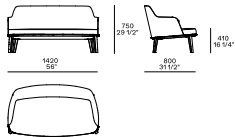
## DESCRIPTION

<b>Typologie</b>	Sofa
<b>Structure</b>	Polyuréthane souple moulé avec des pièces en polyuréthane souple de différentes densités
<b>Sous-sol</b>	Bois massif ou métal peint
<b>Pré-revêtement</b>	Parties en toile de coton avec duvet et parties en ouate de polyester couplée
<b>Revêtement étiré final</b>	Amovible en tissu ou cuir non amovible

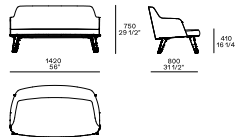
---

## DIMENSIONS

Base d'essence



Base de métal

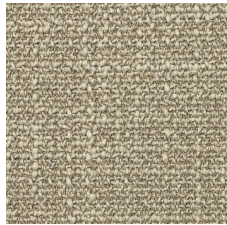


## FINITIONS DU COUVERCLE

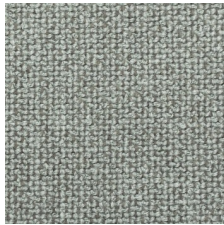
### Tessuti



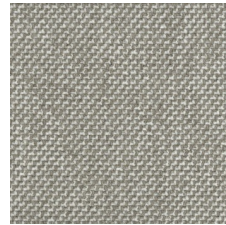
Agadir



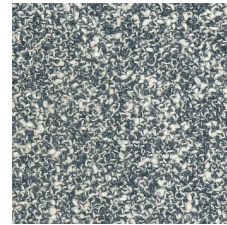
Antea



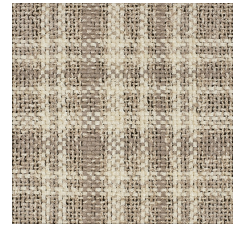
Arcadia



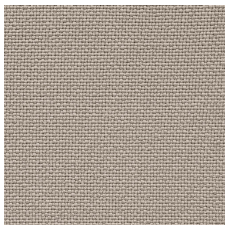
Argo



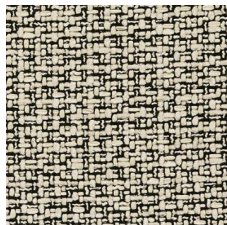
Brest



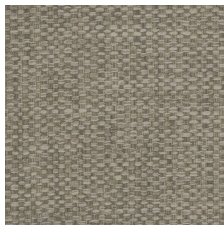
Dundee



Norwich



Sheffield



Chios



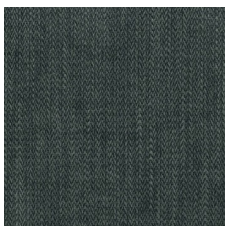
Eraclea



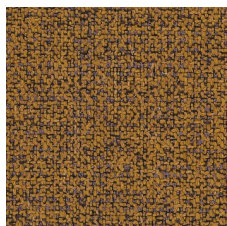
Glasgow



Hannover



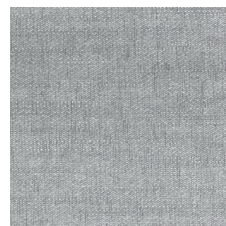
Itaca



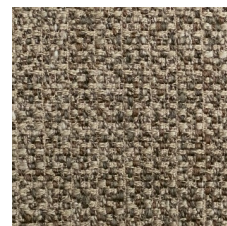
Kitami



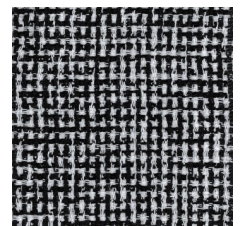
Kushiro



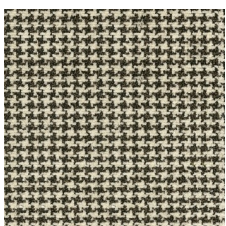
Lima



Micene



Milos



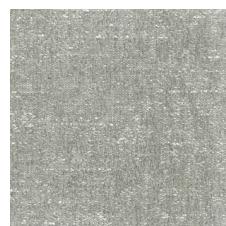
Nancy



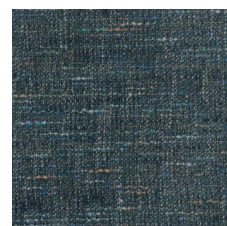
Naxos



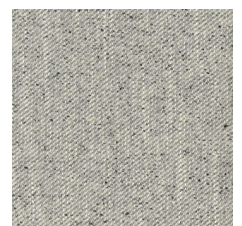
Nayoro



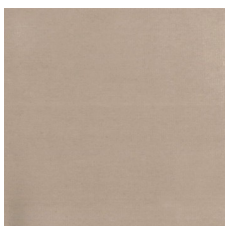
Olimpia



Orleans



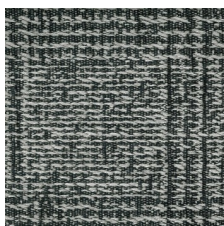
Oxford



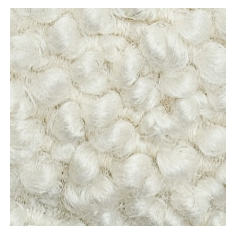
Persia



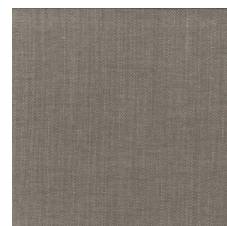
Rabat



Sendai



Siro

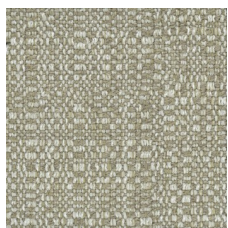


Siviglia

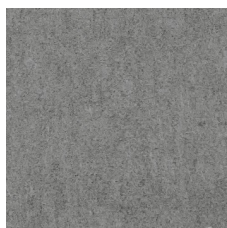


Skyros

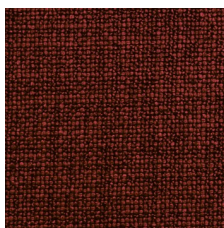




Sparta



Tebe

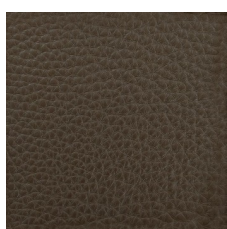


Caleo

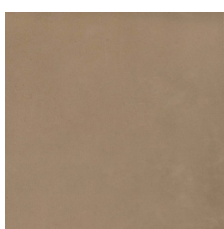
## Pelli



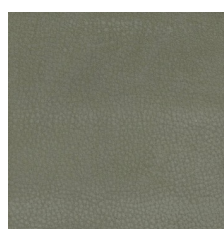
Colors



Deep



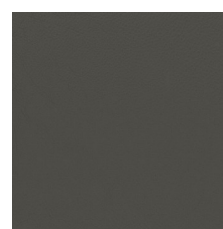
Invecchiata



Nabuk



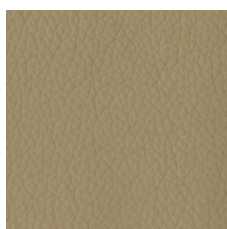
Silk



Soft



Special



Spring

## FINITIONS DES BASES

### Essenza



Essence

### Parti metalliche



Parties métalliques